



RTM-090 Magnetic Bearing Centrifugal Compressor

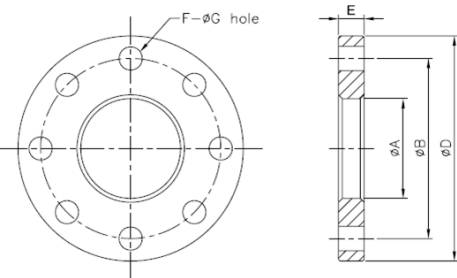
Specifications



Model		RTM-090	
Refrigerant		R134a / 1234ez	
Nominal cooling capacity		USRT(TONS)	400~450
Compressor	Type	Two-stage compression	
	Frequency	Hz	130 to 225
Axial Guide Vane Control	Type	Inlet Guide Vanes	20~100% continuous
		Voltage	220 VDC
		Input Signal	4~20mA - DC: 1~5V - DC
		Output Signal	4~20mA - DC
Motor	Type	3 Phase, 2 Pole, Permanent magnet	
	Starting	VFD	
	Voltage	V	460
	Insulation	Class H	
	Protection	PT100*9 - Motor Winding(5) - Magnetic Bearing (4)	
Transmission	Type	Direct-driven	
	Lubrication	Oil free	
Hydrostatic pressure test		PSI (kg/cm ² g)	321 PSI (22 kg/cm ² g)
Dimension (LxWxH) Compressor		FT	4.26 X 2.62 x 2.30
Weight (Compressor) 1 skid		LB	2315 Compressor (skid - 36 x 59 x 43) Crated weight 2578
Shipping Weight (Components) 1 skid		LB	(skid 53 X 50 X 29) Crated weight 641

Suction/discharge/economizer flange size

Position	Size	A	B	D	E	F	G	Piping Thickness	Bushing OD
RTM-090	Suction	8"	8.70"	12.00"	13.78"	1.18"	0.47"	0.98"	0.32"
	Discharge	6"	6.71"	10.24"	12.00"	1.10"	0.24"	0.98"	0.28"
	MID-PRESS (Eco.)	2 1/2"	3.05"	5.51"	6.89"	0.79"	0.31"	0.75"	0.20"
Remarks		*Material- standard JIS 284.47 pounds per square inch steel unit: inches							



Discharge Check Valve Size

To protect compressor from serious damage due to reverse rotation after emergency stop or shutdown, it is necessary to install the discharge check valve.

Warning: Discharge check valve is mandatory

Size	A(in)	B(in)	C(in)	D(in)
4"	2.52"	6.14"	4.41"	2.08"
6"	2.99"	8.38"	6.30"	3.03"
8"	3.50"	10.51"	8.27"	4.01"
10"	4.49"	12.91"	10.24"	4.21"
Remark	*The check valve is of wafer plate valve. Use ANSI 150 standard flange			

Table-4 Check valve size

MCC

Model	Voltage	(kW)	Primary Side		SECONDARY SIDE (Inverter to RTM)	
	(V)		Hertz	MCC(A)	Hertz	MCC(A)
RTM-090	460	285	50/60	405	225.0	530